



LEASEHOLD

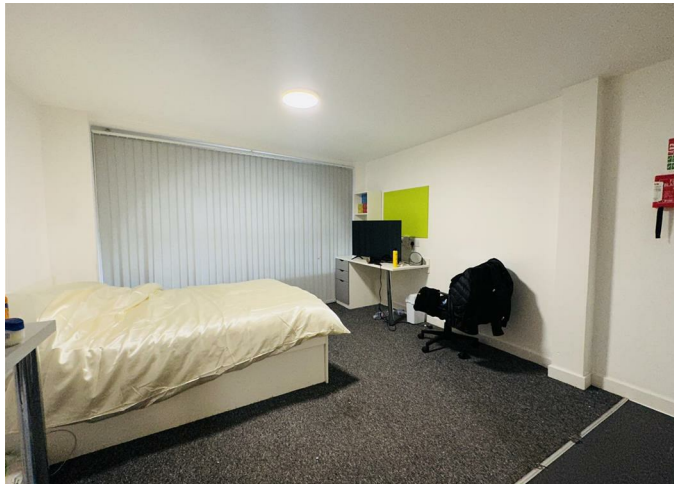
Flat

# FIVEWAYS HOUSE LEICESTER LE3 5HU

## PRICE: £30,000

### FEATURES

- One Bedroom Studio
- Ideal Investment Opportunity
- Kitchenette
- Generating Income of £6,375
- Games Room
- Open Plan Living
- Occupied by Students
- Double Glazed
- Gym
- Laundry Room



# 1 Bedroom Flat located in Leicester

Call us on

0116 266 9977

[sales@seths.co.uk](mailto:sales@seths.co.uk)

[www.seths.co.uk](http://www.seths.co.uk)

\*\*\* INVESTMENT OPPORTUNITY - 1 BEDROOM STUDIO FLAT AT TUDOR STUDIOS, TUDOR ROAD \*\*\*

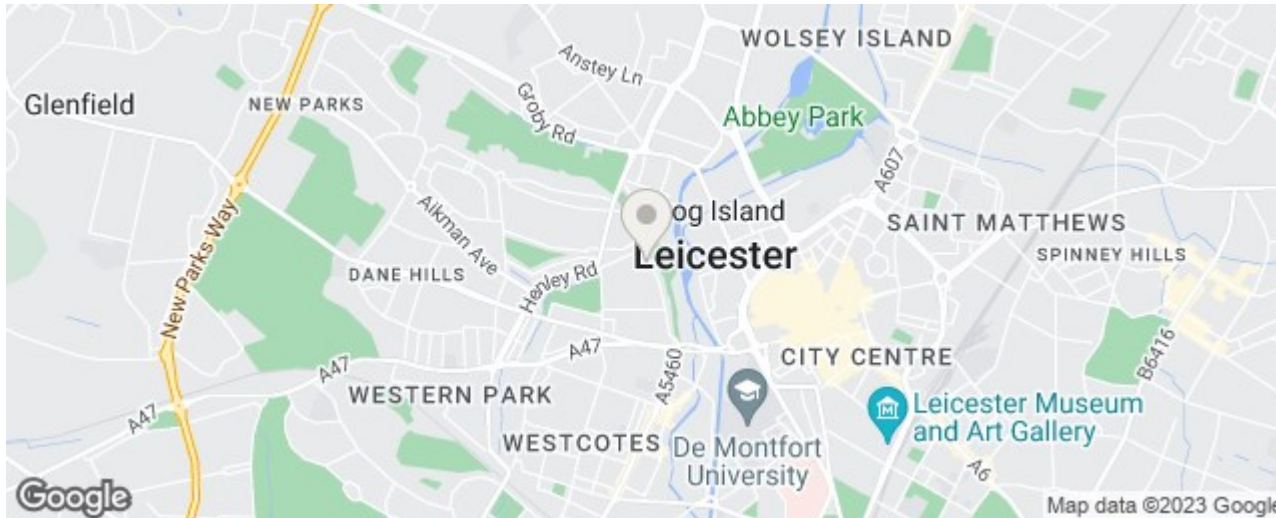
Introducing this student accommodation at Tudor Studios, Tudor Road. This 1 bedroom studio flat is an ideal investment opportunity, offering a guaranteed income of £6,375.

The property features a comfortable open plan layout with a lounge/diner and kitchen, providing students with a functional living space. The studio is complemented by a bathroom for convenience.

Residents of Tudor Studios enjoy access to a communal area, a laundry room, and a gym, enhancing the overall living experience.

The property is managed by a professional management company that takes care of arranging student move-ins, ensuring a hassle-free investment for you. It is let on a 51-week contract.

Don't miss the chance to invest in this profitable student accommodation at Tudor Studios, Tudor Road. Contact Seths today for more details and to explore this excellent investment opportunity.



Council Tax Band

A

## Energy Efficiency Rating

	Current	Potential
<i>Very energy efficient - lower running costs</i>		
(92 plus) <b>A</b>		
(81-91) <b>B</b>		
(69-80) <b>C</b>	73	73
(55-68) <b>D</b>		
(39-54) <b>E</b>		
(21-38) <b>F</b>		
(1-20) <b>G</b>		
<i>Not energy efficient - higher running costs</i>		
<b>England &amp; Wales</b>	EU Directive 2002/91/EC	

Agents Note: Whilst every care has been taken to prepare these particulars, they are for guidance purposes only. All measurements are approximate and are for general guidance purposes only and whilst every care has been taken to ensure their accuracy, they should not be relied upon and potential buyers are advised to recheck the measurements.